



BE A PART OF PREMIER CARD 2025!

Join the 130+ Oklahoma City, Edmond, and Norman merchants participating in award-winning Payne Education Center's 26th annual fundraiser to support its best-in-class dyslexia training programs and advocacy efforts.

What is Payne Education Center?

Payne Education Center was founded in 1984 to raise awareness about dyslexia and its challenges, and to improve the diagnosis and reading remediation of Oklahomans with dyslexia. Our mission is to train teachers to prevent reading difficulties in children and to remediate dyslexia, while serving as a resource and referral center. *"No Child Should Struggle to Read."*

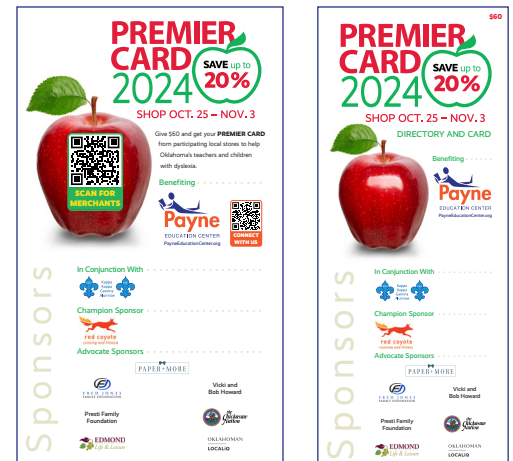
How Does Premier Card Work?

- A shopper gets a Premier Card (directory and card) from a participating local merchant.
- Participating merchants offer a discount of up to 20% to Premier Card holders during the 10-day Premier Card timeframe (October 24-November 2, 2024).
- All donations are used to support Payne's teacher training programs and dyslexia advocacy efforts.

Why Should My Business Participate?

- Bring some new business into your store!
- It doesn't cost you anything to participate! All you need to do is offer Premier Cards and honor your chosen discount for the 10-day period.
- Gain exposure in our donated ad space, email blasts, website listing, and social media posts.
- We want you to be successful! To help, in addition to Premier Cards, we'll supply posters and table tents to help you promote your participation.
- Play a part in giving self-confidence and hope to struggling readers — enabling them to not only be successful in their studies, but in life as well. Who wouldn't feel good about that?

Examples of 2024 Materials



Posters

Premier Cards



Online brochure (condensed listing)

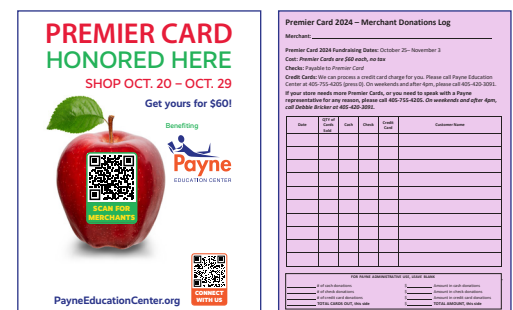


Table Tents

Donations Log